



# TRAMADOL ABUSE: A GROWING CONCERN IN PAIN MANAGEMENT AND PUBLIC HEALTH

Dr. Girender Kumar Gautam, Amit Rathore\* Dr. Jagpal Singh,  
Akansha Nirwal, Deepak Kumar, Km. Sweta, Aryan Sharma

Shri Ram College of Pharmacy Muzaffarnagar, Uttar Pradesh

## Abstract

*Tramadol, a synthetic opioid commonly prescribed for moderate to severe pain, is increasingly recognized for its abuse potential, despite initial perceptions of being a safer alternative to other opioids. Its dual mechanism of action, involving mu-opioid receptor binding and monoamine reuptake inhibition, contributes to both its analgesic efficacy and its potential for misuse. Over recent years, the misuse of tramadol has become a global public health issue, exacerbated by its accessibility and the misconception that it has a lower risk of dependency. This review examines the pharmacology of tramadol, the factors contributing to its misuse, and the adverse physical and psychological effects associated with its abuse. Key risk factors include socioeconomic and environmental conditions, psychological vulnerabilities, and ease of access in regions with limited regulation. Tramadol abuse can lead to serious health impacts, including respiratory depression, cognitive impairment, and dependence. Current treatment options, including medication-assisted therapy and behavioral interventions, are essential in managing tramadol dependency, though more research is needed to develop targeted approaches. This review underscores the urgent need for comprehensive preventive strategies, public education, and improved regulation to address the challenges posed by tramadol abuse. Addressing these factors can help mitigate the risks associated with tramadol and ensure its safer use in pain management.*

**Keywords:** Tramadol, Opioid Abuse, Dependency, Pain Management, Public Health

## 1. Introduction

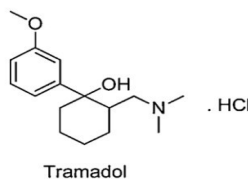
Tramadol is a synthetic opioid analgesic that has gained widespread use due to its effectiveness in managing moderate to moderately severe pain across various medical conditions. Since its introduction in the 1970s, tramadol has been prescribed in millions of cases worldwide, often preferred over traditional opioids due to its unique dual-action mechanism. This mechanism involves not only the activation of mu-opioid receptors, which are primarily responsible for its pain-relieving effects but also the inhibition of serotonin and norepinephrine reuptake, leading to a broader range of pharmacological effects. Initially, tramadol was considered to have a relatively low risk of dependency, especially when compared

to stronger opioids like morphine and fentanyl. However, the perception of tramadol as a "safer" opioid has contributed to its overprescription, ultimately revealing a significant potential for abuse and dependency.

In recent years, tramadol misuse has emerged as a concerning public health issue. In both developed and developing countries, instances of tramadol abuse have escalated due to its widespread availability and comparatively lax regulatory oversight. In many low- and middle-income countries, tramadol can often be obtained without a prescription, making it more accessible and increasing the risk of misuse, especially among vulnerable populations. These include individuals with untreated mental health conditions, such as depression or anxiety, who may misuse tramadol for its mood-enhancing effects, as well as those with a history of substance abuse seeking an alternative to traditional opioids.

The consequences of tramadol misuse are severe and multifaceted. Beyond physical dependency, tramadol abuse can lead to a wide range of health issues, including respiratory depression, seizures, cognitive impairment, and a spectrum of psychological complications. High doses or prolonged use can intensify these effects, creating a cycle of dependency that is challenging to break. Additionally, tramadol's effects on serotonin and norepinephrine increase the risk of serotonin syndrome, especially when combined with other serotonergic drugs, further compounding its dangers.

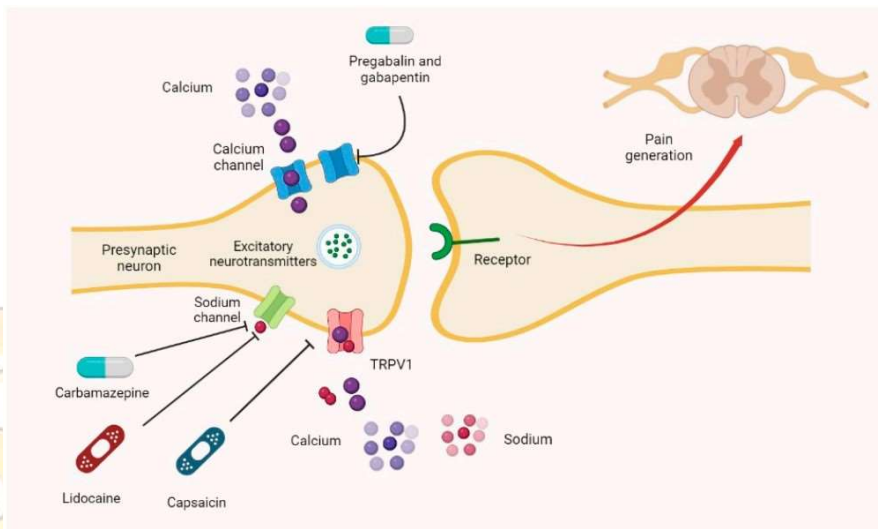
Despite its therapeutic benefits, the increasing rate of tramadol misuse has highlighted the urgent need for effective preventive and regulatory measures. This review aims to examine tramadol abuse comprehensively, focusing on its pharmacological properties, mechanisms contributing to misuse, and the associated health risks. Additionally, we discuss current treatment and management strategies, such as medication-assisted therapy (MAT) and behavioral interventions, as well as the importance of regulatory and preventive strategies in minimizing misuse. By exploring these facets, this paper seeks to contribute to the growing body of research on tramadol, encouraging informed practices that prioritize patient safety and minimize the risks of dependency associated with this commonly prescribed opioid.



**Figure: - 1** Chemical structure of tramadol

## 2. Pharmacology of Tramadol

Tramadol is a centrally acting synthetic opioid with a distinct pharmacological profile that sets it apart from other opioids. It is primarily known for its dual mechanism of action, which combines opioid receptor agonism with monoaminergic effects. This unique combination contributes to its analgesic efficacy while also influencing its potential for misuse and dependency.



**Figure: - 2** Pharmacological action of tramadol

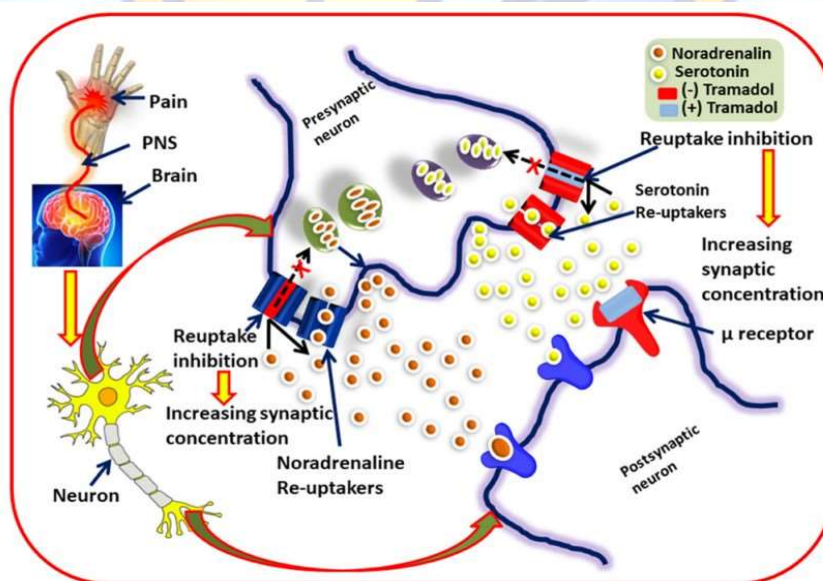
### 2.1 Mechanism of Action

Tramadol's analgesic effects are achieved through two main mechanisms:

Mechanism Component	Description
<b>Primary Mechanisms</b>	
<b>Mu-Opioid Receptor Binding</b>	Tramadol binds to mu-opioid receptors in the brain, partially activating them to produce analgesic effects
<b>Serotonin Reuptake Inhibition</b>	Inhibits reuptake of serotonin in the central nervous system (CNS), enhancing pain modulation.
<b>Norepinephrine Reuptake Inhibition</b>	Inhibits reuptake of norepinephrine, supporting descending pain inhibition pathways and reducing pain perception.
<b>Secondary Mechanisms</b>	
<b>NMDA Receptor Modulation</b>	Weak NMDA receptor antagonist activity that may help in neuropathic pain modulation, though less prominent.

<b>Active Metabolite (O-Desmethyltramadol)</b>	Metabolized by CYP2D6 to produce O-Desmethyltramadol, a metabolite with higher affinity for mu-opioid receptors, contributing to prolonged analgesia.
<b>Dopamine Modulation (Minor)</b>	Slight dopamine reuptake inhibition, which may have a minor impact on mood elevation and analgesia.
<b>Anti-Inflammatory Properties</b>	Minor anti-inflammatory effects may occur due to modulation of certain inflammatory pathways, though limited.
<b>GABA Modulation (Indirect)</b>	Slight indirect effect on GABAergic activity, potentially contributing to sedation and muscle relaxation.
<b>Effect on Pain Pathways</b>	The combined effects on mu-opioid, serotonin, and norepinephrine pathways result in a robust analgesic response by addressing multiple pain modulation
<b>Metabolism</b>	Tramadol is primarily metabolized in the liver via CYP2D6 and CYP3A4, producing both active and inactive metabolites.
<b>Excretion</b>	Excreted through the kidneys; the half-life supports sustained pain relief for moderate

**Table 1** - The primary mechanisms of pain relief and some secondary effects that support Tramadol's efficacy, especially for complex or chronic pain management.



**Figure: - 3** Schematic representation of MOA of Tramadol.



• **Mu-Opioid Receptor Agonism:**

Tramadol itself has a low affinity for the mu-opioid receptors, but once metabolized in the liver, it is converted into a more potent metabolite, O-desmethyltramadol (M1). This metabolite has a much higher affinity for the mu-opioid receptors, which are primarily responsible for its pain-relieving effects. Activation of these receptors decreases pain perception and provides a sense of euphoria, which contributes to tramadol's potential for misuse.

• **Inhibition of Monoamine Reuptake**

Unlike traditional opioids, tramadol inhibits the reuptake of two key neurotransmitters, serotonin and norepinephrine, in the central nervous system. This inhibition contributes to its analgesic effects and influences mood, often leading to mild antidepressant effects. The combined action of opioid receptor agonism and monoamine reuptake inhibition provides a broader analgesic effect and is particularly useful in treating certain types of pain, such as neuropathic pain. However, this dual mechanism also increases the risk of serotonin syndrome, particularly when tramadol is used with other serotonergic medications.

**2.2 Pharmacokinetics**

Tramadol is administered orally, intravenously, intramuscularly, or as a suppository, with the oral route being the most common. Following oral administration, tramadol is rapidly absorbed and undergoes extensive hepatic metabolism, primarily through the cytochrome P450 enzyme CYP2D6. This metabolism produces the active metabolite, O-desmethyltramadol (M1), which is approximately six times more potent than tramadol in binding to mu-opioid receptors. The genetic variability in CYP2D6 among individuals affects the rate of metabolism and, consequently, the drug's efficacy and potential for side effects. "Poor metabolizers" may experience reduced analgesic effects, while "ultra-rapid metabolizers" are at increased risk of adverse effects due to higher concentrations of M1.

Tramadol has a relatively short half-life of around 5-6 hours, with its metabolites remaining active for slightly longer. This shorter half-life requires dosing multiple times daily for consistent pain relief, increasing the potential for misuse.

**2.3 Adverse Effects**

Adverse Effect	Description
<b>Common Adverse Effects</b>	
<b>Nausea and Vomiting</b>	Often occurs as a gastrointestinal response, especially at higher doses or in new users.
<b>Dizziness</b>	Tramadol can cause dizziness due to its CNS effects, increasing the risk of falls.
<b>Drowsiness and Sedation</b>	May lead to drowsiness, especially when combined



	with other CNS depressants, affecting alertness.
<b>Constipation</b>	Common opioid-related side effect due to slowed gastrointestinal motility.
<b>Headache</b>	Some users experience headaches, which may be related to CNS effects or dehydration.
<b>Dry Mouth</b>	Decreased saliva production, a common opioid side effect, leading to dry mouth and sometimes bad breath.
<b>Sweating</b>	Increased sweating, possibly due to effects on the autonomic nervous system.
<b>Less Common but Serious Adverse Effects</b>	
<b>Seizures</b>	Higher doses, long-term use, or use with other medications that lower the seizure threshold can provoke seizures.
<b>Respiratory Depression</b>	At high doses, Tramadol can depress breathing, especially risky with other CNS depressants.
<b>Dependence and Withdrawal</b>	Long-term use can lead to physical dependence, with withdrawal symptoms upon discontinuation.
<b>Serotonin Syndrome</b>	Risk increases when combined with other serotonergic drugs, potentially causing confusion, fever, and tremors.
<b>Hypotension</b>	Can cause low blood pressure, especially in those prone to orthostatic hypotension.
<b>Allergic Reactions</b>	Some individuals may experience allergic reactions, including rashes, itching, or anaphylaxis.
<b>Mood Changes</b>	Can cause mood changes, including euphoria, agitation, or anxiety in some users.
<b>Liver or Kidney Toxicity (Rare)</b>	Long-term or high-dose use may increase strain on the liver and kidneys, particularly in susceptible individuals.
<b>Risk of Misuse and Addiction</b>	Although less potent than other opioids, Tramadol still carries a risk of misuse and addiction.

**Table 2 - adverse effects of Tramadol**

- **Seizures:** Tramadol lowers the seizure threshold, especially at high doses or in patients with a history of epilepsy. Combining tramadol with other drugs that lower the seizure threshold, such as antidepressants, further increases this risk.

- **Serotonin Syndrome:** Due to its serotonergic action, tramadol can cause serotonin syndrome, a potentially life-threatening condition characterized by confusion, agitation, rapid heart rate, high blood pressure, dilated pupils, muscle rigidity, and in severe cases, seizures or coma. This risk is heightened when tramadol is used with other serotonergic agents, such as SSRIs, SNRIs, or MAO inhibitors.
- **Dependence and Withdrawal:** Prolonged tramadol use can lead to tolerance, physical dependence, and withdrawal symptoms upon discontinuation. Withdrawal symptoms may include restlessness, anxiety, sweating, chills, nausea, and hallucinations, resembling both opioid and serotonin withdrawal syndromes.

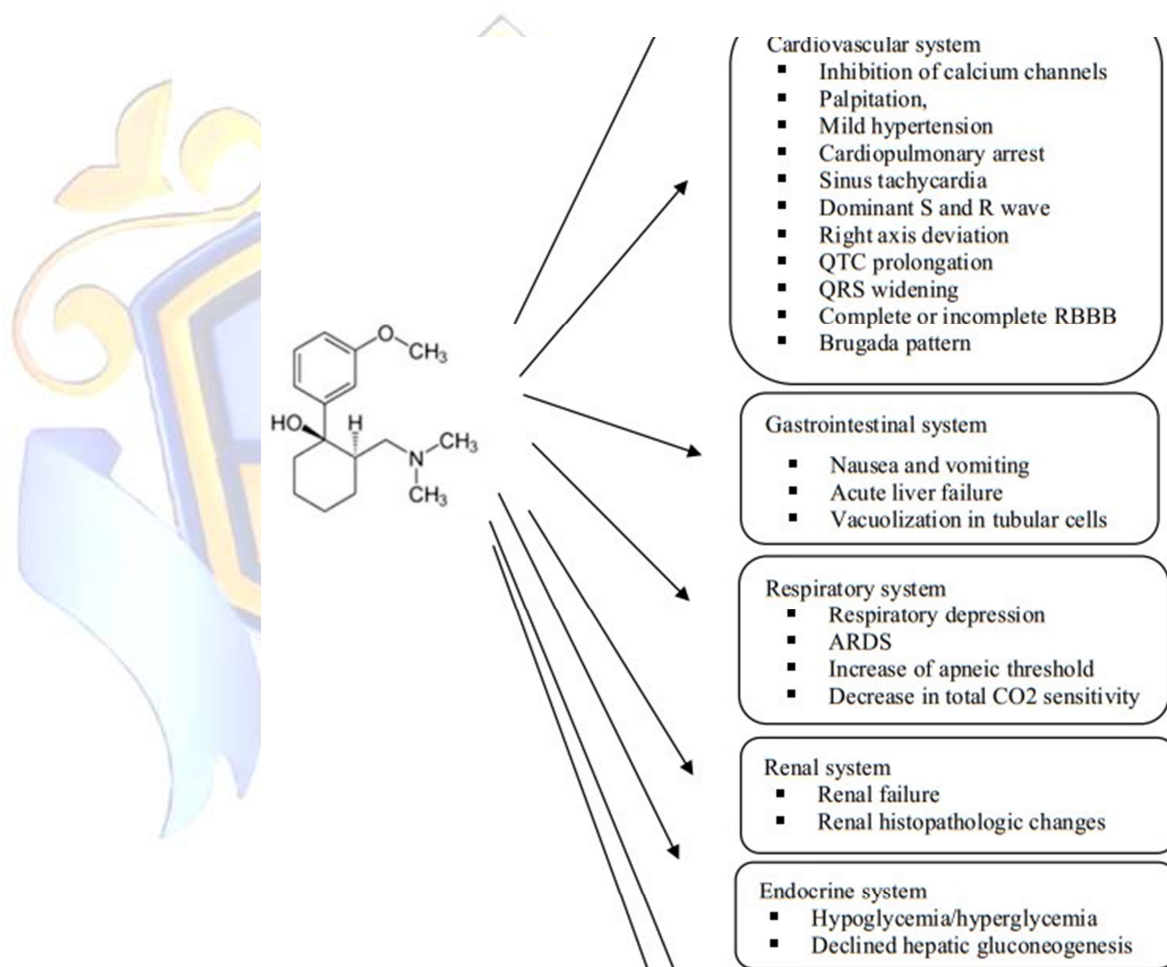


Figure: - 4 Adverse effect of tramadol

## 2.4 Abuse Potential and Tolerance

Initially, tramadol was considered a safer alternative to other opioids due to its lower affinity for opioid receptors and its additional monoaminergic effects. However, it has become evident that tramadol carries a considerable risk of abuse and dependency.



Patients often develop tolerance over time, requiring higher doses to achieve the same analgesic effect. As dosing increases, the risk of dependence and withdrawal symptoms also rises.

Tramadol's unique dual mechanism makes it particularly susceptible to misuse among individuals with mood disorders, who may find the serotonergic effects to have mood-elevating benefits. Moreover, the euphoric effects induced by the opioid component of tramadol add to its appeal among those prone to substance misuse.

Aspect	Description
<b>Abuse Potential</b>	
<b>Euphoric Effects</b>	Tramadol can produce mild euphoria due to its action on the mu-opioid receptors and slight dopamine modulation.
<b>Risk of Misuse</b>	Although less potent than other opioids, Tramadol still has a risk of misuse, particularly at higher doses.
<b>Dependence</b>	Long-term use can lead to physical dependence, with withdrawal symptoms like restlessness, sweating, and nausea upon stopping.
<b>Withdrawal Symptoms</b>	Withdrawal can include symptoms such as anxiety, insomnia, tremors, sweating, and, in severe cases, seizures.
<b>Risk Factors for Abuse</b>	Higher doses, history of substance misuse, or use in combination with other CNS depressants increase abuse potential.
<b>Controlled Substance Status</b>	In many countries, Tramadol is a controlled substance due to its abuse potential, especially when used recreationally.
<b>Tolerance</b>	
<b>Development of Tolerance</b>	With prolonged use, the body may require higher doses to achieve the same level of analgesic or euphoric effects.
<b>Tolerance to Analgesic Effects</b>	Users may develop tolerance to pain relief, requiring higher doses for effective pain management.
<b>Tolerance to Euphoric Effects</b>	Tolerance to the euphoric effects develops relatively quickly, increasing the risk of misuse.
<b>Cross-Tolerance</b>	Tolerance to Tramadol may contribute to tolerance to other opioids, impacting their effectiveness as well.
<b>Dose Escalation</b>	Tolerance can lead to dose escalation, which increases the risk of adverse effects, including respiratory



	depression and seizures.
<b>Reversibility of Tolerance</b>	Tolerance can decrease after stopping Tramadol, but re-exposure may lead to faster tolerance redevelopment.

**Table 3 - Abuse potential and tolerance characteristics of Tramadol**

### 3. Risk Factors for Tramadol Misuse

The misuse of tramadol has become a serious public health concern, especially as it is widely prescribed and often viewed as a “safer” alternative to other opioids. However, a combination of biological, psychological, social, and environmental factors can significantly increase the risk of tramadol misuse and dependency. Understanding these factors is essential for identifying individuals at risk and for developing effective prevention and intervention strategies.

#### 3.1 Biological and Physiological Risk Factors

- **Genetic Predisposition:**

Genetic factors play a substantial role in an individual’s susceptibility to addiction. Variations in genes that affect dopamine regulation, reward pathways, and opioid receptor sensitivity can increase the risk of dependence on substances like tramadol. Additionally, genetic variability in the CYP2D6 enzyme, which metabolizes tramadol, affects how individuals respond to the drug, with “ultra-rapid metabolizers” experiencing heightened effects and potentially greater risks of dependency.

- **History of Substance Use:**

Individuals with a prior history of substance abuse, whether involving alcohol, opioids, or other drugs, are more likely to misuse tramadol. These individuals may seek out tramadol for its euphoric effects or as a substitute when other opioids are unavailable, increasing the risk of dependency.

- **Presence of Chronic Pain:**

Chronic pain conditions often require long-term pain management, and tramadol is frequently prescribed as part of this regimen. Prolonged use can lead to tolerance, requiring higher doses to achieve the same pain relief, which raises the risk of dependency and misuse.

#### 3.2 Psychological and Behavioral Risk Factors

- **Mental Health Disorders:**

Individuals with mental health conditions, such as depression, anxiety, or bipolar disorder, are at an elevated risk of tramadol misuse. Tramadol’s serotonergic effects may



provide temporary mood enhancement, making it appealing for those seeking relief from symptoms of depression or anxiety.

- **Personality Traits:**

Certain personality traits, including impulsivity, sensation-seeking, and low resilience to stress, have been linked to higher rates of substance misuse. These traits can increase the likelihood of tramadol misuse, particularly among those prone to risk-taking behavior.

- **Self-Medication:**

People experiencing physical or emotional pain may self-medicate with tramadol, using it for purposes beyond its intended prescription. This self-medication often involves taking higher doses or more frequent doses than prescribed, increasing the risk of dependency and adverse effects.

### 3.3 Social and Environmental Risk Factors

- **Ease of Access:**

In many regions, tramadol is available without a prescription or is poorly regulated, making it easier for individuals to obtain and misuse. In low- and middle-income countries, tramadol is often sold over-the-counter, contributing to higher rates of abuse.

- **Socioeconomic Status:**

Individuals from lower socioeconomic backgrounds may have limited access to mental health care and pain management resources, increasing their likelihood of misusing tramadol as a means of coping with physical or emotional distress.

- **Peer Influence and Social Networks:**

Social circles and peer pressure can strongly influence tramadol misuse, particularly among younger individuals. In environments where substance use is normalized or glamorized, individuals may feel pressured to experiment with or misuse drugs like tramadol.

- **Occupational and Environmental Stress:**

High-stress jobs or environments where individuals experience chronic stress may increase the likelihood of tramadol misuse as a means of coping. For example, individuals in physically demanding jobs may rely on tramadol for pain relief and work-related stress, potentially leading to dependency over time.

### 3.4 Misconceptions and Lack of Awareness

- **Perception of Safety:**

Tramadol is often marketed as a safer opioid, leading to the misconception that it has a lower risk of dependency compared to other opioids. This perception may encourage individuals to take higher doses or use tramadol for longer than prescribed, believing that they are not at risk of addiction.



- **Lack of Education on Risks:**

Many patients and even healthcare providers may not be fully aware of the dependency risks associated with tramadol. Without proper education on the drug's potential for misuse, patients are more likely to misuse tramadol, either through self-medication or accidental overuse.

- **Limited Monitoring and Follow-Up:**

In healthcare systems with limited resources or where pain management protocols lack sufficient follow-up, tramadol prescriptions may go unmonitored. This lack of supervision can lead to prolonged use or misuse without timely interventions, increasing the risk of dependency.

### 3.5 Cultural and Regional Factors

- **Cultural Norms:**

In some cultures, the use of pain-relieving medications like tramadol is normalized, and individuals may be more likely to self-medicate without regard to prescription guidelines. This cultural acceptance can contribute to widespread misuse.

- **Regulatory Differences:**

In regions where tramadol is not classified as a controlled substance or is available over-the-counter, abuse rates tend to be higher. Regulatory variations can contribute to differences in misuse patterns across countries.

## 4. Health Impact of Tramadol Abuse

Tramadol abuse has significant health implications, spanning physical, psychological, and social dimensions. Given its dual-action mechanism, tramadol not only acts as an opioid but also impacts serotonin and norepinephrine levels, leading to a complex range of health risks.

### 4.1 Physical Health Consequences:

The misuse of tramadol can lead to severe physical risks, particularly respiratory depression, which can be life-threatening when used in high doses or in combination with other CNS depressants. Another serious risk is seizures, as tramadol lowers the seizure threshold. Long-term abuse may also cause serotonin syndrome, marked by symptoms like high blood pressure, agitation, and muscle rigidity. Chronic gastrointestinal issues, including nausea, vomiting, and constipation, are also common.

### 4.2 Psychological and Cognitive Effects:

Tramadol dependence can result in psychological withdrawal symptoms, including anxiety, agitation, and hallucinations, which complicate recovery. Due to its serotonergic effects, tramadol abuse may worsen mental health conditions such as depression and anxiety, affecting mood stability and increasing the risk of suicide in some cases. Cognitive impairments, including difficulty concentrating and memory issues, may also arise, impacting everyday life.



### 4.3 Behavioral and Social Changes

Individuals who misuse tramadol may exhibit behavioral changes, such as neglect of responsibilities, social isolation, and increased risk-taking behaviors. These behaviors strain relationships, reduce productivity, and may lead to social withdrawal and diminished quality of life.

## 5. Treatments Approaches

Treatment of tramadol abuse includes a combination of medication-assisted therapy (MAT), counseling, and support networks. The use of methadone or buprenorphine has been shown to help manage withdrawal symptoms effectively.

### 5.1 Medication- Assisted Therapy:

Some individuals may benefit from medications commonly used to treat opioid dependence, such as buprenorphine or methadone. These medications help reduce cravings and withdrawal symptoms by acting on the same opioid receptors as tramadol, allowing for a safer transition during the recovery process. In cases with pronounced serotonin-related withdrawal symptoms, antidepressants may be prescribed to help stabilize mood.

### 5.2 Behavioral Therapies:

Psychotherapy, including cognitive-behavioral therapy (CBT) and contingency management, is critical in helping individuals understand and modify behaviors associated with tramadol abuse. CBT can help patients identify triggers, manage cravings, and develop coping skills. Motivational interviewing may also be used to strengthen commitment to change.

## 6. Preventive Measures for Tramadol Abuse

Preventing tramadol abuse is crucial to addressing the growing concern over its misuse. This requires a multifaceted approach that includes public health initiatives, responsible prescribing, education, and support systems aimed at reducing the risk of abuse.

### 6.1 Awareness and Education:

Public health campaigns that focus on educating the community about the risks associated with tramadol misuse are essential. Providing information on the potential for dependence, the signs of misuse, and the importance of adhering to prescribed dosages can empower patients to use tramadol responsibly. Educational programs can also be implemented in schools and community centers to increase awareness among adolescents and young adults, who are at higher risk of experimenting with medications.

### 6.2 Responsible Prescribing Practices:

Healthcare providers should adopt stringent prescribing practices to minimize the risk of tramadol misuse. This includes conducting thorough patient assessments, considering non-opioid alternatives for pain management, and utilizing prescription monitoring programs (PMPs) to track patient prescriptions. Providers should also provide clear



instructions regarding dosage, potential side effects, and the importance of adhering to prescribed guidelines to reduce the risk of abuse.

### **7. Future Directions and Research Needs in Tramadol Abuse**

As tramadol misuse continues to be a growing concern, it is essential to identify future directions for research and intervention strategies to address this issue effectively. There is a need for comprehensive studies and initiatives that can enhance understanding and inform best practices in prevention, treatment, and policy-making.

#### **7.1 Longitudinal Studies on Abuse Patterns:**

Research should focus on longitudinal studies to understand the patterns and trends of tramadol abuse over time. This includes examining demographic variations, co-occurring substance use disorders, and the long-term effects of tramadol on physical and mental health. Such studies can help identify risk factors and inform targeted prevention efforts.

#### **7.2 Effectiveness of Treatment Modalities:**

More research is needed to evaluate the effectiveness of various treatment modalities for tramadol abuse. This includes assessing the impact of medication-assisted treatment (MAT) compared to traditional therapeutic approaches, as well as the role of psychosocial interventions in promoting long-term recovery. Understanding which combinations of therapies yield the best outcomes can enhance treatment protocols.

#### **7.3 Development of Guidelines for Prescribing Practices:**

There is a pressing need for evidence-based guidelines for healthcare providers on the responsible prescribing of tramadol. Research should focus on identifying best practices that balance effective pain management with the minimization of abuse potential. This includes the development of tools for risk assessment and decision-making in prescribing.

### **Conclusion**

Tramadol abuse is a significant public health concern that poses numerous risks to individuals' physical and mental well-being. As a medication with both opioid and serotonergic properties, tramadol's potential for misuse can lead to a range of adverse effects, including dependency, cognitive impairments, and severe health complications. The complex nature of tramadol addiction necessitates a comprehensive approach that includes effective prevention strategies, responsible prescribing practices, and accessible treatment options. Throughout the review, it has become evident that awareness and education are crucial in mitigating the risks associated with tramadol use. Healthcare providers must adopt responsible prescribing practices and monitor patients closely to detect early signs of misuse. In addition, robust treatment modalities, including medical detoxification, medication-assisted therapies, and behavioral interventions, are essential for supporting individuals struggling with addiction. Future research is needed to enhance our understanding of tramadol abuse patterns, treatment efficacy, and the impact of policy changes. By exploring alternative pain management options and integrating mental



health services, stakeholders can improve outcomes for those affected by tramadol misuse.

### Reference

1. M. S. F. Shafiq, H. M. Said, A. A. B. Ali, R. K. Abd El-Rahman, "Pharmacological and toxicological aspects of tramadol: A review," Egyptian Journal of Forensic Sciences, vol. 10, no. 1, pp. 1-10, 2020
2. M. A. W. Saeed, A. F. Al-Harbi, "Tramadol abuse: A review of the literature," Saudi Pharmaceutical Journal, vol. 26, no. 2, pp. 109-114, 2018.
3. D. L. Johnson, "The use and abuse of tramadol in the treatment of pain," American Journal of Health-System Pharmacy, vol. 73, no. 1, pp. 39-43, 2016
4. A. M. K. Ahmed, T. A. Alqadri, "Tramadol: A rising epidemic," The Egyptian Journal of Neurology, Psychiatry and Neurosurgery, vol. 55, no. 1, pp. 1-5, 2019.
5. L. M. C. Lindgren, M. G. V. H. Segal, "Opioid crisis: The role of tramadol in substance abuse," Journal of Addiction Medicine, vol. 13, no. 2, pp. 85-90, 2019.
6. U. M. B. S. Veiga, J. S. M. Barros, "Serotonin syndrome and tramadol: A review," Journal of Clinical Psychopharmacology, vol. 40, no. 4, pp. 422-423, 2020.
7. T. C. Y. A. Ahmed, A. B. Y. Abdullah, "Tramadol and its effects: A review of current literature," International Journal of Medical Sciences, vol. 17, no. 2, pp. 135-142, 2020.
8. M. S. A. Khalaf, "Tramadol abuse: An emerging issue," Journal of Addiction Research & Therapy, vol. 10, no. 1, pp. 1-3, 2019.
9. J. F. D. Lacouture, "The role of tramadol in managing chronic pain: A literature review," Pain Medicin
10. J. A. M. Mirza, "Pharmacology and toxicology of tramadol," Journal of Pharmaceutical Sciences, vol. 102, no. 8, pp. 2447-2459, 2013.
11. S. A. Reece, K. J. L. Barnard, "Management of tramadol withdrawal: A case report," Clinical Journal of Pain, vol. 31, no. 8, pp. 728-731, 2015.
12. M. J. V. Clark, "Understanding and managing tramadol misuse," Pain Management, vol. 8, no. 2, pp. 143-149, 2018.
13. C. D. B. H. T. F. R. G. F. Y. Tsai, "Review of tramadol abuse and treatment," Journal of Clinical Psychopharmacology, vol. 38, no. 5, pp. 496-499, 2018.
14. B. A. B. Alhusseini, M. R. N. MacLean, "Opioids in pain management: Focus on tramadol," International Journal of Clinical Pharmacy, vol. 41, no. 1, pp. 35-44, 2019.
15. S. M. El-Masry, R. E. H. Abou El-Fadl, "The pharmacokinetics and pharmacodynamics of tramadol," Journal of Pharmacy and Pharmacognosy Research, vol. 7, no. 2, pp. 81-95, 2019.
16. N. C. J. H. Garcia, "Tramadol: A review of its use in pain management," Canadian Journal of Anesthesia, vol. 63, no. 10, pp. 1150-1161, 2016.



17. P. H. W. Al-Khalidi, A. R. A. Al-Shammari, "Impact of tramadol abuse on public health," American Journal of Public Health Research, vol. 6, no. 1, pp. 1-7, 2018.
18. A. L. A. E. A. El-Bakary, "Clinical management of tramadol addiction," Journal of Substance Abuse Treatment, vol. 93, pp. 20-28, 2018.
19. M. A. E. Ibrahim, "Preventive strategies for tramadol abuse," Journal of Substance Use, vol. 24, no. 4, pp. 345-351, 2019.
20. S. A. A. Abdu, "Tramadol dependence and withdrawal: Clinical aspects," Substance Abuse and Rehabilitation, vol. 10, pp. 11-19, 2019.
21. Marcianò, G.; Vocca, C.; Evangelista, M.; Palleria, C.; Muraca, L.; Galati, C.; Monea, F.; Sportiello, L.; De Sarro, G.; Capuano, A.; et al. The Pharmacological Treatment of Chronic Pain: From Guidelines to Daily Clinical Practice. *Pharmaceutics* 2023, 15, 1165. <https://doi.org/10.3390/pharmaceutics15041165>.
22. Samaneh Nakhaee; Christopher Hoyte; Richard C. Dart; Masoumeh Askari; Roland J. Lamarine; Omid Mehrpour; "A review on tramadol toxicity: mechanism of action, clinical presentation, and treatment", *Forensic Toxicology* (2021) 39:293–310.
23. Muna Subedi, Shalini Bajaj, Maushmi S. Kumar, Mayur YC; "An overview of tramadol and its usage in pain management and future perspective", Shobhaben Pratapbhai Patel School of Pharmacy and Technology Management, SVKM'S NMIMS, V.L. Mehta Road, Vile Parle West, Mumbai, 400056, India